



ADL Traffic and Highways Engineering Ltd
ADL House, Oaklands Business Park, Armstrong Way, Yate, Bristol, BS37 5NA
Tel: 01454 332 100 Email: cad@adltraffic.co.uk

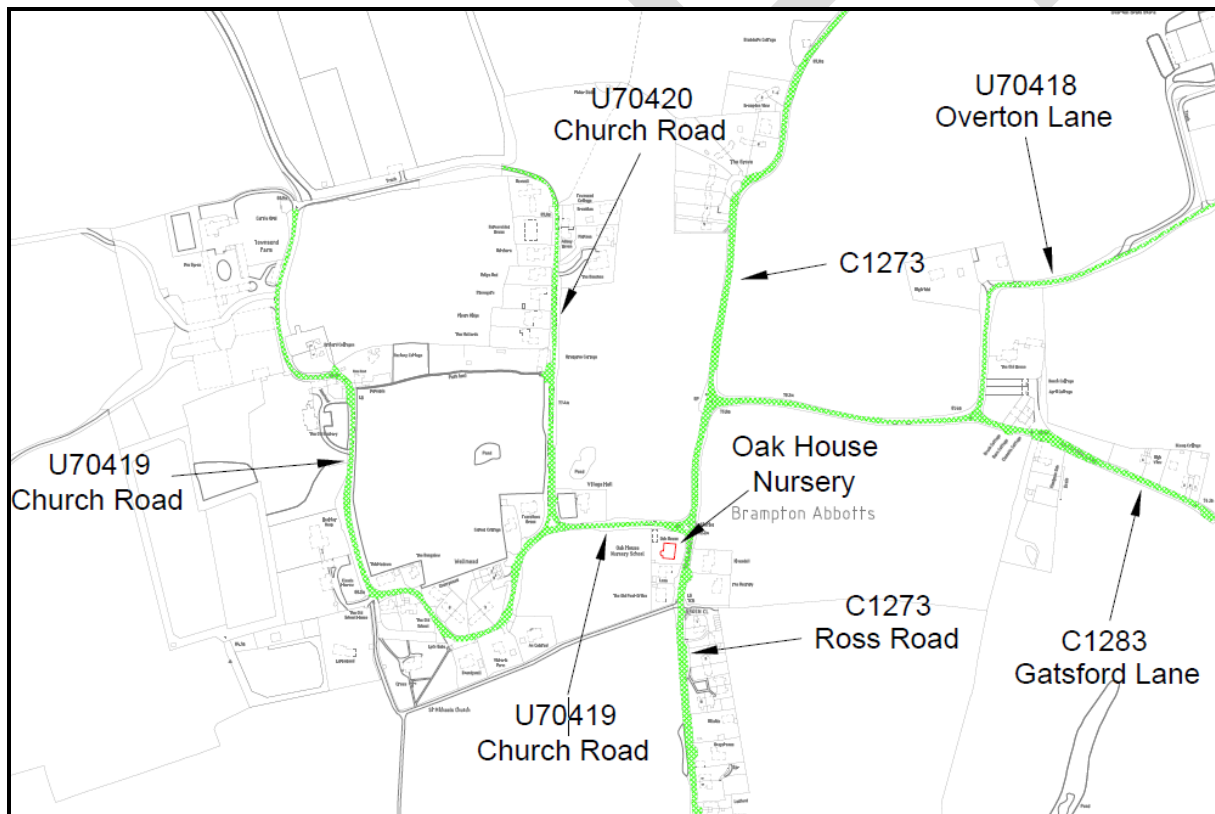
BRIEFING NOTE

OAK HOUSE NURSERY, BRAMPTON ABBOTTS

ADL REF: 3409/42/01A AUGUST 2018

Background:

A request was made by the Parish Council in November 2013 asking that consideration be given to the introduction of parking restrictions around the junction of the U70419 Church Road and the C1273 Ross Road in the vicinity of Oak House Nursery, Brampton Abbots. The location of the nursery in relation to the local road network is shown in the plan below.



ADL Traffic and Highways Engineering Ltd, on behalf of Herefordshire Council and Balfour Beatty Living Places, have been instructed to assess the suitability of implementing parking

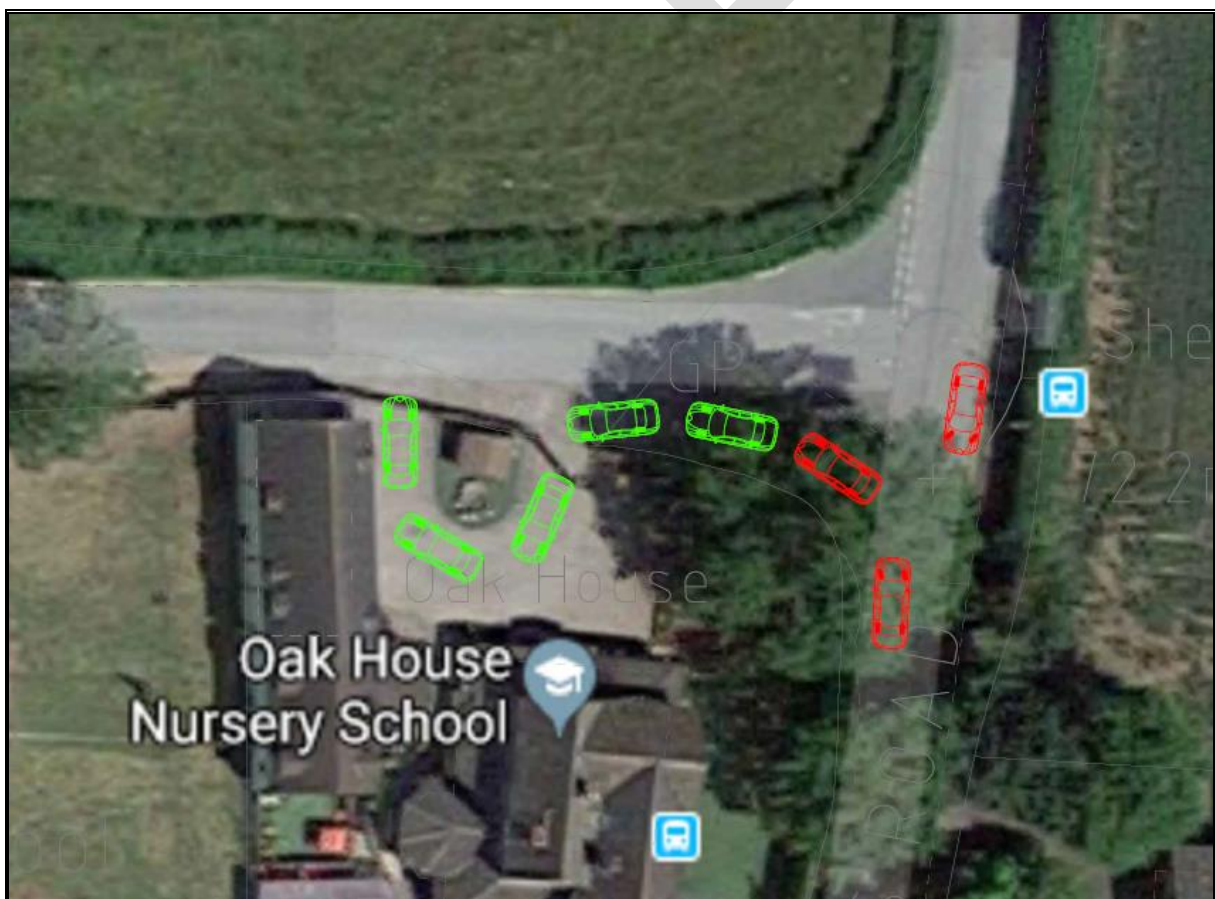
restrictions at the junction of the C1273 Ross Road with the U70419 Church Road in the vicinity of the Oak House Nursery in Brampton Abbots.

Engineering and Environment:

Oak House Nursery is located on the southwest corner of the C1273 Ross Road junction with the U70419 Church Road.

There are two vehicular accesses to the nursery. The ingress is located at approximately 18 metres west of the junction and the egress is located at approximately 26 metres west of the junction.

The on-site nursery car park provides space for up to three medium cars to park as shown on the plan below.



During a site visit it was observed that most parents used the nursery's on-site car park/drop off area. Typically, it was observed that three cars were in the car park/drop off area with a

further two cars waiting to enter the car park/drop off area. Observations indicated that this led to vehicles blocking the junction of the C1273 Ross Road with the U70419 Church Road. This was seen to occur both during the morning drop-off time and evening pick-up time. This situation is shown on the above plan and on the screenshot of the dashcam footage given below.

From the U70419 Church Road towards the C1273 Ross Road junction



The nursery are currently displaying boards on their boundary fence along the southwest corner of the junction advising parents not to park along this section. Despite this, there were a maximum of two cars observed being parked on this section during drop-off and pick-up times. Strictly speaking these signs should be removed as they do not conform to the Traffic Signs Regulations and General Directions 2016 and are not backed by a legal Traffic Order prohibiting parking.

These cars were however parked away from the junction give-way markings as shown on the screenshots of the dashcam footage on the given below. These vehicles were visible to the drivers intending to turn into the U70419 Church Road from the C1273 Ross Road and hence were not considered to cause a highway road safety concern.

From the C1273 Ross Road turning right into the U70419 Church Road with cars parked on approach



From the C1273 Ross Road turning left into the U70419 Church Road with cars parked on approach



The site observations conclude that:

1. There were never more than two cars parked on the U70419 Church Road approach to the junction with the C1273 Ross Road during drop-off and pick-up times. This did not appear to cause a highway road safety concern.
2. Parents intending to access the nursery car park caused blocking back at the junction which resulted in localised congestion during drop-off and pick-up times.
3. Not many parents chose to park on the U70419 Church Road to the west of the nursery.

Rather than issues with parked vehicles around the C1273 Ross Road with the U70419 Church Road junction, observations do point to the main traffic problem being vehicles waiting to enter the nursery car park/drop off. It is considered that the introduction parking restrictions in the vicinity of the nursery is unlikely to mitigate this traffic problem. However, there is anecdotal evidence that indicates that regular parking does indeed occur in and around the junction, causing visibility and manoeuvring problems. It is therefore considered prudent to implement parking restrictions around this junction in order to keep it clear of parked vehicles.

Recommendations:

It is recommended to introduce parking restrictions at the junction of the C1273 Ross Road with the U70419 Church Road in the vicinity of Oak House Nursery, Brampton Abbots. As mentioned previously, parking restrictions will not solve the current localised congestion at the junction of the C1273 Ross Road with the U70419 Church Road which is resulting from queueing vehicles waiting to enter the nursery car park/drop off area. But, the implementation of parking restrictions will remove the ability for vehicles to be parked at this junction and so aid visibility and manoeuvrability for all vehicles trying to access into or egress from The U70419 Church Road.